



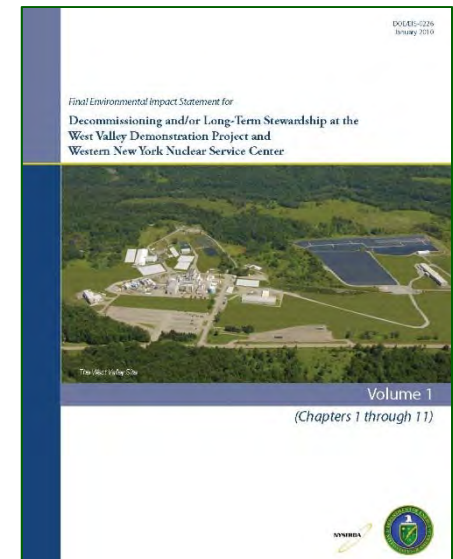
THE PHASED DECISION- MAKING ALTERNATIVE FROM THE 2010 FINAL ENVIRONMENTAL IMPACT STATEMENT

**BRYAN BOWER, WEST VALLEY
DEMONSTRATION PROJECT
DIRECTOR, DOE**

March 2018

2010 Final Environmental Impact Statement (FEIS) (DOE/EIS-0226-F)

- Final Environmental Impact Statement for Decommissioning and/or Long-Term Stewardship at the West Valley Demonstration Project and Western New York Nuclear Service Center
- DOE and NYSERDA selected the Phased Decisionmaking Alternative
 - ▣ Decommissioning conducted in two phases
 - ▣ Deferred decisions on some facilities and areas



Phase 1 Studies

- Intended to facilitate interagency consensus decisions regarding final decommissioning and long-term management of the balance of the WNYNSC
- Subject matter experts conducted the studies, and updates were shared with the public at quarterly public meetings
- Study information available at www.westvalleyphaseonestudies.org



Phase 1 Studies (cont.)

- Erosion
 - Terrain analysis, age dating, and paleoclimate
 - Recent erosion and deposition processes
 - Erosion modeling
- Exhumation
 - Site radiological inventory
 - Geophysical field study
 - Precedent waste exhumation projects and technologies
- Climate
 - Climate Change Workshop held on site in 2012



WVDP Decommissioning Phased Decisionmaking

- Phased Decisionmaking ROD
- Phase 1 Decommissioning Plan

- Final Decommissioning ROD
- Phase 2 Decommissioning Plan

Phase 1 Decommissioning

Phase 1A: Facility Disposition

- Relocate HLW* Canisters to new dry cask storage facility
- Demolish Vitrification Facility (VF) and Main Plant Process Building (MPPB)
- Remove ancillary facilities
- Ship legacy Low Level Waste

Phase 1B: Soil Remediation

- Remove Below Grade Portion of MPPB (including source area of plume), VF
- Remove Lagoons and Liquid Waste Treatment Facility
- Ship Legacy TRU Waste
- Remove Remote Handled Waste Facility and remaining ancillary facilities
- Remediate all WMA 1 & 2 Soil

Phase 2 Decommissioning

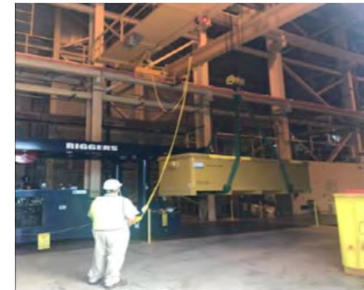
Phase 2 Decisions

- Waste Tank Farm
- Non-Source Area of the North Plateau Groundwater Plume
- Cesium Prong
- Balance of the Western New York Nuclear Service Center property
- U.S. Nuclear Regulatory Commission-Licensed Disposal Area
- Construction and Demolition Debris Landfill
- Contaminated stream sediments
- State-Licensed Disposal Area

*The WVDP Act requires the Department of Energy Secretary, as soon as feasible, to transport in accordance with applicable provisions of the law, to an appropriate federal repository for permanent disposal.

Phase 1A: Facility Disposition Contract Scope and Progress

- **Milestone 1:** Relocation of high-level waste (HLW) canisters and to long-term interim storage – **Complete**
- **Milestone 2:** Process, ship, and dispose of all legacy waste, not including transuranic waste – **90% Complete**



Phase 1A: Facility Disposition Contract Scope and Progress (cont.)

- **Milestone 3:** Demolition and removal of the above-grade portions of the Main Plant Process Building (MPPB) and the Vitrification Facility – **Ongoing**
- **Milestone 4:** Complete all work in performance work statement, including balance of site facilities, surveillance and maintenance, and site operations – **Ongoing**



Videos and fact sheets regarding Phase 1 activities are available at www.chbvw.com

Future Phase 1B: Soil Remediation Scope

- Waste Management Area (WMA) 1 – Remove below-grade portion of MPPB (including source area of plume), and Vitrification Facility
- WMA 2 – Remove Low-Level Waste Treatment Facility structures and lagoons
- Ship legacy transuranic (TRU) waste upon availability of approved disposal facility
- Remove the Remote-Handled Waste Facility and Waste Storage Facilities
- Remediate soil in WMAs 1 and 2

Phase 2 of the Phased Decisionmaking Alternative

High-Level Waste (HLW) Cask Storage Pad

NRC-Licensed Disposal Area (NDA)

State-Licensed Disposal Area (SDA)



Location of the Cesium Prong

Waste Tank Farm

Non-Source Area of the North Plateau Groundwater Plume

Construction and Demolition Debris Landfill (CDDL)